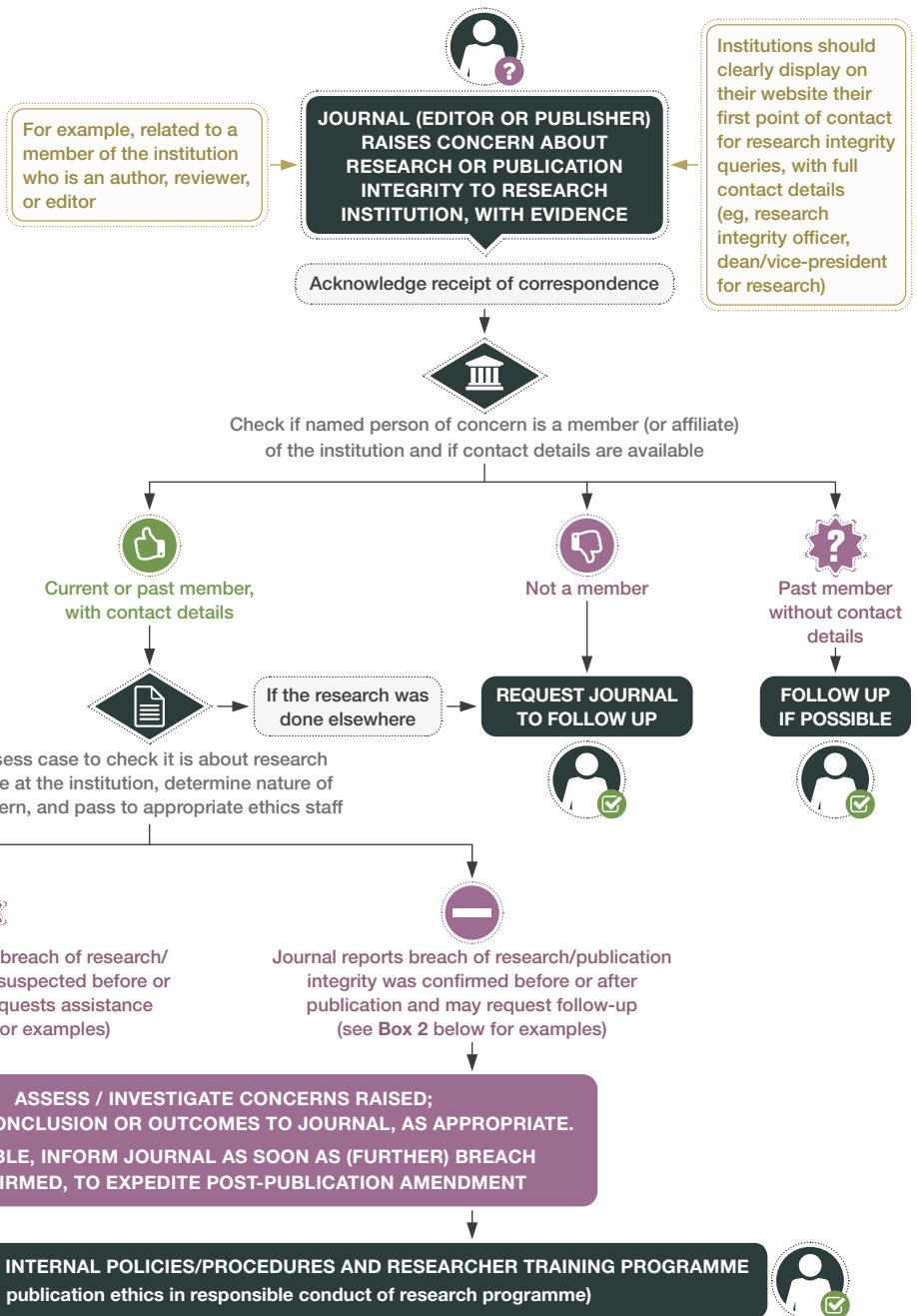


**GUIDANCE FOR WHEN INSTITUTIONS ARE CONTACTED BY JOURNALS**

**Further reading**

- Cooperation between research institutions and journals on research integrity cases <https://doi.org/10.24318/cope.2018.1.3>
- RePAIR consensus guidelines <https://cope.onl/repair>
- Cooperation and liaison between universities and editors (CLUE): Recommendations on best practice <https://doi.org/10.1186/s41073-021-00109-3>
- Enhancing partnerships of institutions and journals to address concerns about research misconduct: <https://doi.org/10.1001/jamanetworkopen.2023.20796>



**Box 1 - Examples of suspected breach of research or publication integrity**

- Reviewer suspected to have appropriated an author's ideas or data (<https://doi.org/10.24318/cope.2019.2.5>)
- Changes in authorship (incomplete consent for adding author before/after publication or for removing author before/after publication) (<https://doi.org/10.24318/cope.2019.2.8>), (<https://doi.org/10.24318/cope.2019.2.10>), (<https://doi.org/10.24318/cope.2019.2.9>), (<https://doi.org/10.24318/cope.2019.2.11>)
- Suspected ethical problem (lack of ethical approval, concern about participant consent or animal experimentation) in a submitted manuscript (<https://doi.org/10.24318/cope.2019.2.19>)
- Undisclosed conflict of interest before/after publication\* (<https://doi.org/10.24318/cope.2019.2.6>), (<https://doi.org/10.24318/cope.2019.2.7>)
- Image manipulation in a published article\* (<https://doi.org/10.24318/cope.2019.2.21>)
- Fabricated data before/after publication\* (<https://doi.org/10.24318/cope.2019.2.3>), (<https://doi.org/10.24318/cope.2019.2.4>)
- Plagiarism before/after publication\* (<https://doi.org/10.24318/cope.2019.2.1>), (<https://doi.org/10.24318/cope.2019.2.2>)
- Redundant (duplicate) publication before/after publication\* (<https://doi.org/10.24318/cope.2019.2.12>), (<https://doi.org/10.24318/cope.2019.2.13>)
- Systematic manipulation of the publication process before/after publication\* (<https://doi.org/10.24318/cope.2019.2.23>)
- Peer review manipulation suspected during/after publication\* (<https://doi.org/10.24318/cope.2019.2.20>), (<https://doi.org/10.24318/dvuDitEV>)

**Box 2 - Examples of confirmed breach of research or publication integrity**

- Ghost, guest, or gift authorship, or author ghosted another or invited guest/gift author in a submitted manuscript (<https://doi.org/10.24318/cope.2019.2.18>)

\*Situations in box 1 that could also apply to box 2.

Cite this as:  
 COPE Council.  
 COPE Flowcharts and infographics – Guidance for when institutions are contacted by journals – English.  
<https://doi.org/10.24318/GvV9U5HC>  
 ©2024 Committee on Publication Ethics (CC BY-NC-ND 4.0)

publicationethics.org

