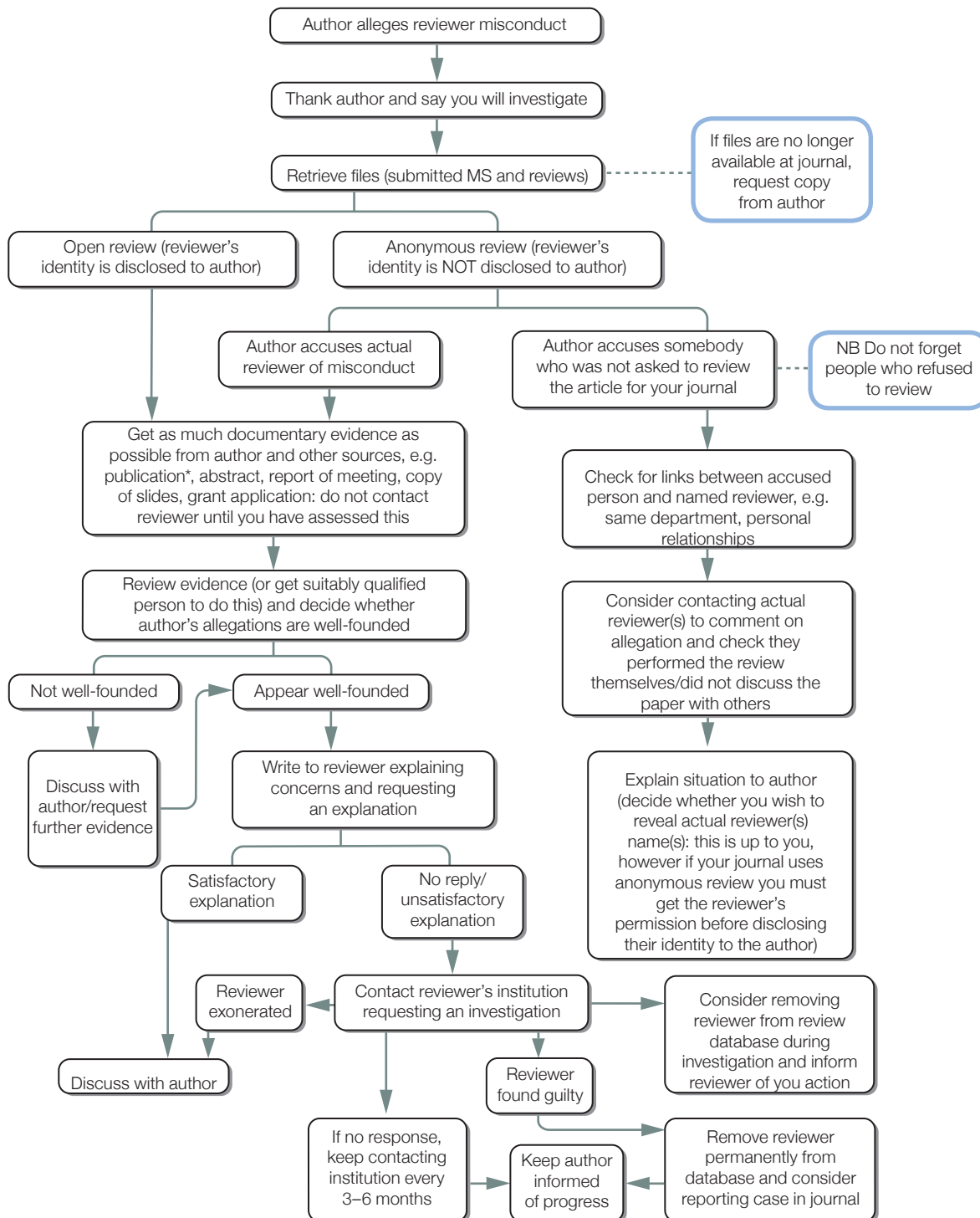


# What to do if you suspect a reviewer has appropriated an author's ideas or data



**Note**  
The instruction to reviewers should state that submitted material must be treated in confidence and may not be used in any way until it has been published

**Note**  
Options depend on type of review system used

**\*Note**  
If author produces published paper this may be handled as plagiarism (see plagiarism flow chart)

Developed for COPE by Liz Wager of Sideview ([www.lizwager.com](http://www.lizwager.com)) © 2013 Committee on Publication Ethics First published 2006

A non-exclusive licence to reproduce these flowcharts may be applied for by writing to: [cope\\_administrator@publicationethics.org](mailto:cope_administrator@publicationethics.org)