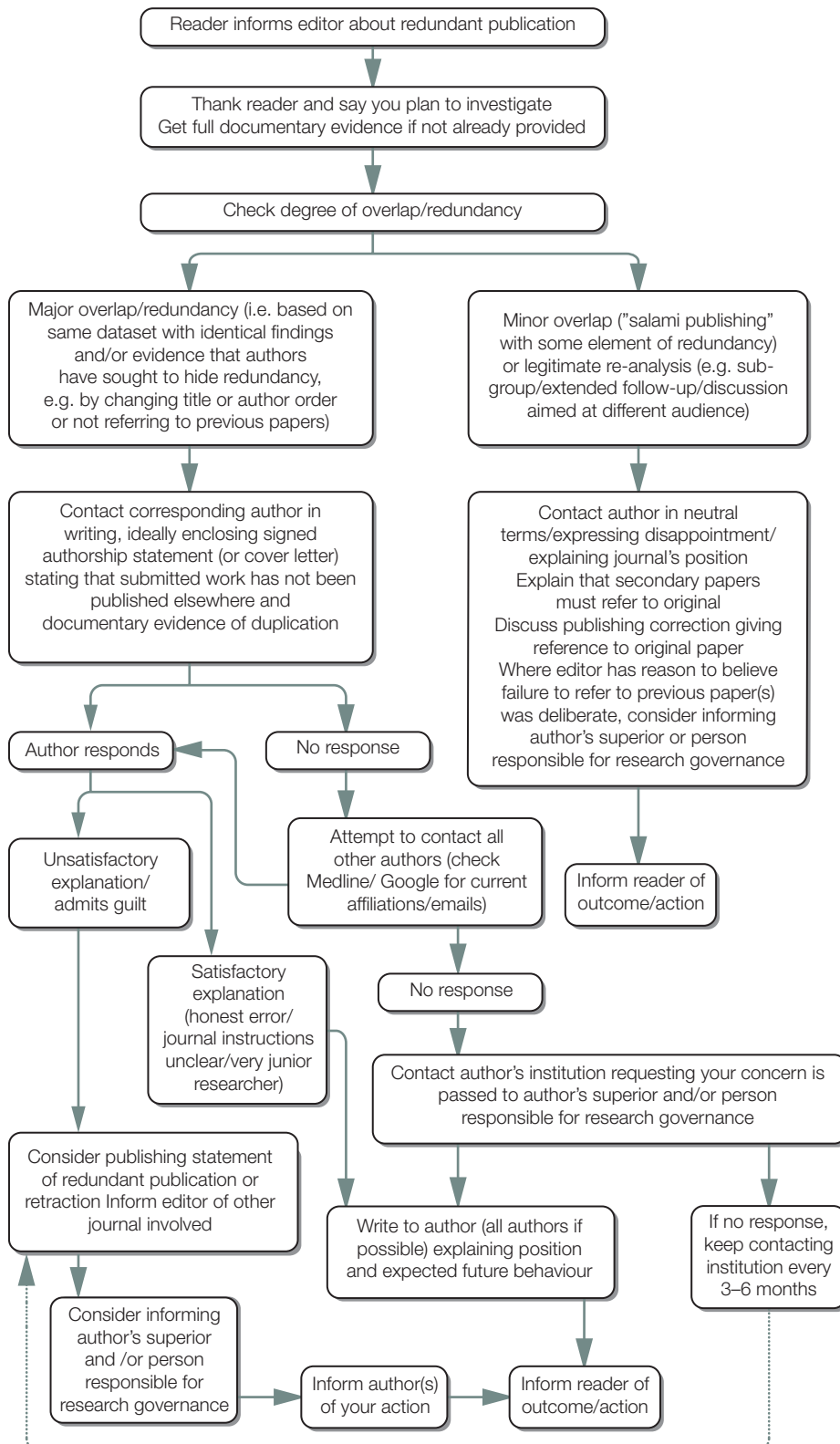


What to do if you suspect redundant (duplicate) publication (b) Suspected redundant publication in a published manuscript



Note: The instructions to authors should state the journal's policy on redundant publication.

Asking authors to sign a statement or tick a box may be helpful in subsequent investigations.

Note: ICMJE advises that translations are acceptable but MUST reference the original. Editors may consider publishing a correction (i.e. the link to the original article) rather than a retraction/notice of duplicate publication in such cases.

Version one
Published 2006

Developed for COPE by Liz Wager of Sideview (www.lizwager.com)
© 2013 Committee on Publication Ethics

A non-exclusive licence to reproduce these flowcharts may be applied for by writing to: cope_administrator@publicationethics.org