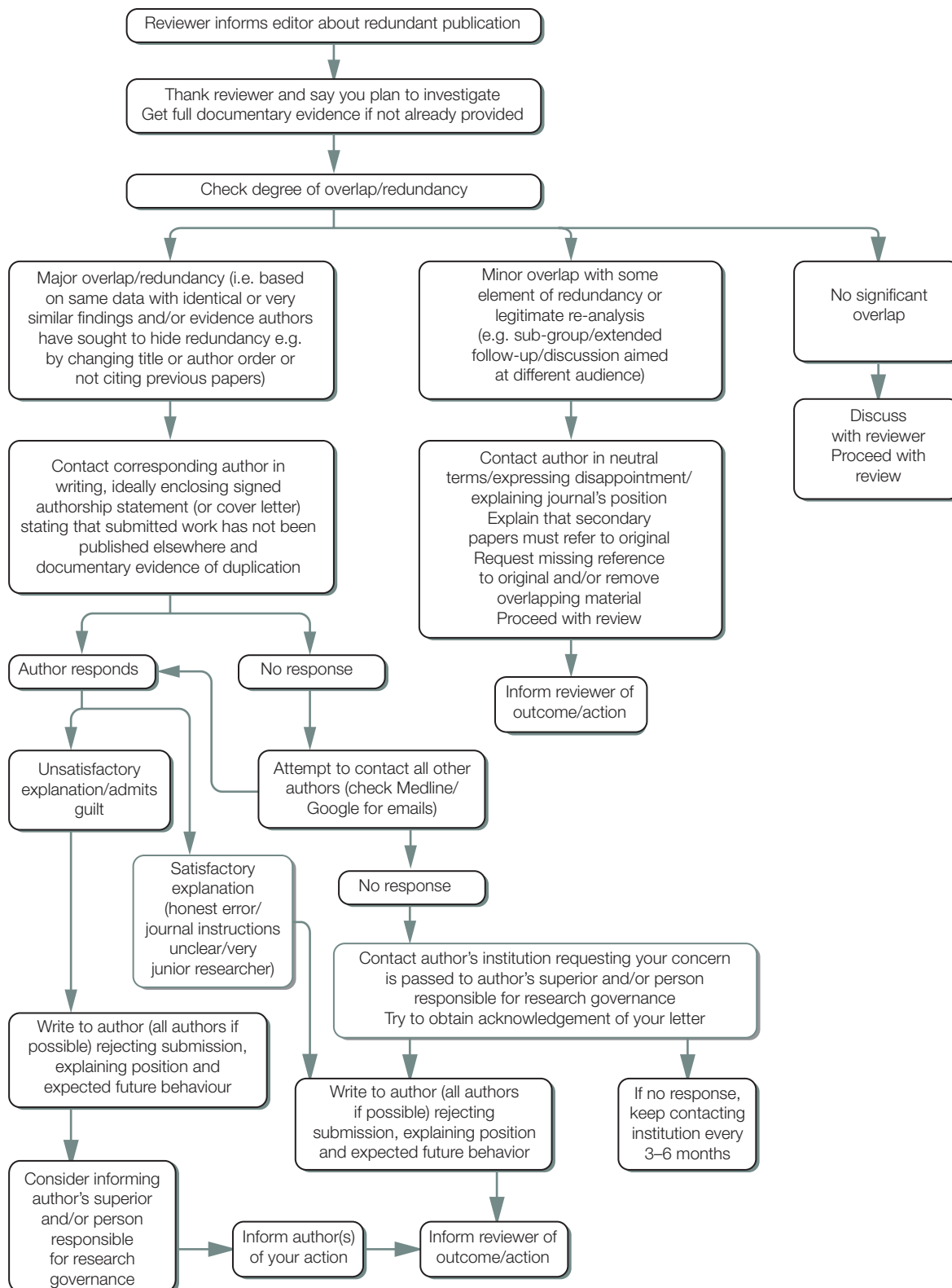


# What to do if you suspect redundant (duplicate) publication

## (a) Suspected redundant publication in a submitted manuscript



Note: The instructions to authors should state the journal's policy on redundant publication.

Asking authors to sign a statement or tick a box may be helpful in subsequent investigations.

Note: ICMJE advises that translations are acceptable but MUST reference the original.

**Version one**  
Published 2006

Developed for COPE by Liz Wager of Sideview ([www.lizwager.com](http://www.lizwager.com))  
© 2013 Committee on Publication Ethics  
First published 2006

A non-exclusive licence to reproduce these flowcharts may be applied for by writing to: [cope\\_administrator@publicationethics.org](mailto:cope_administrator@publicationethics.org)